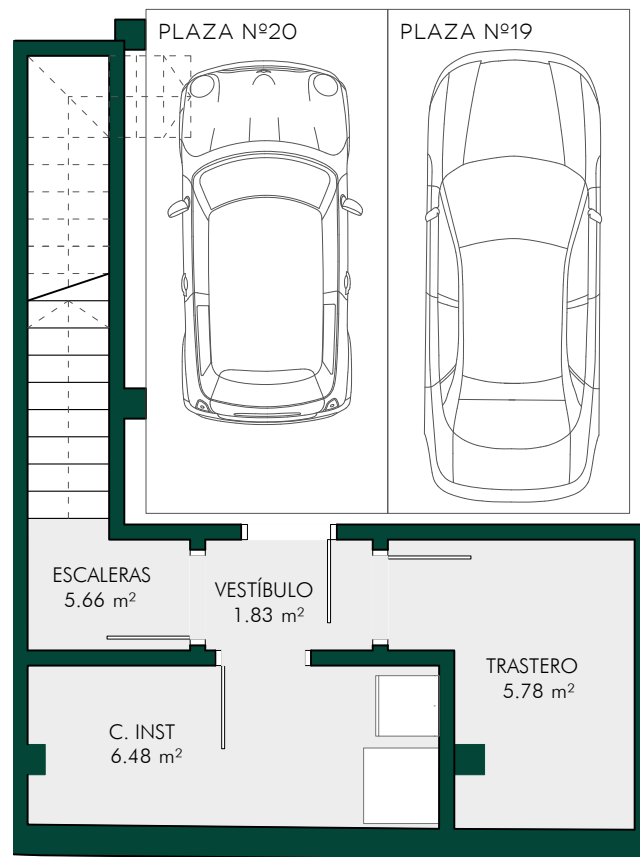
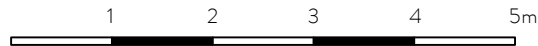


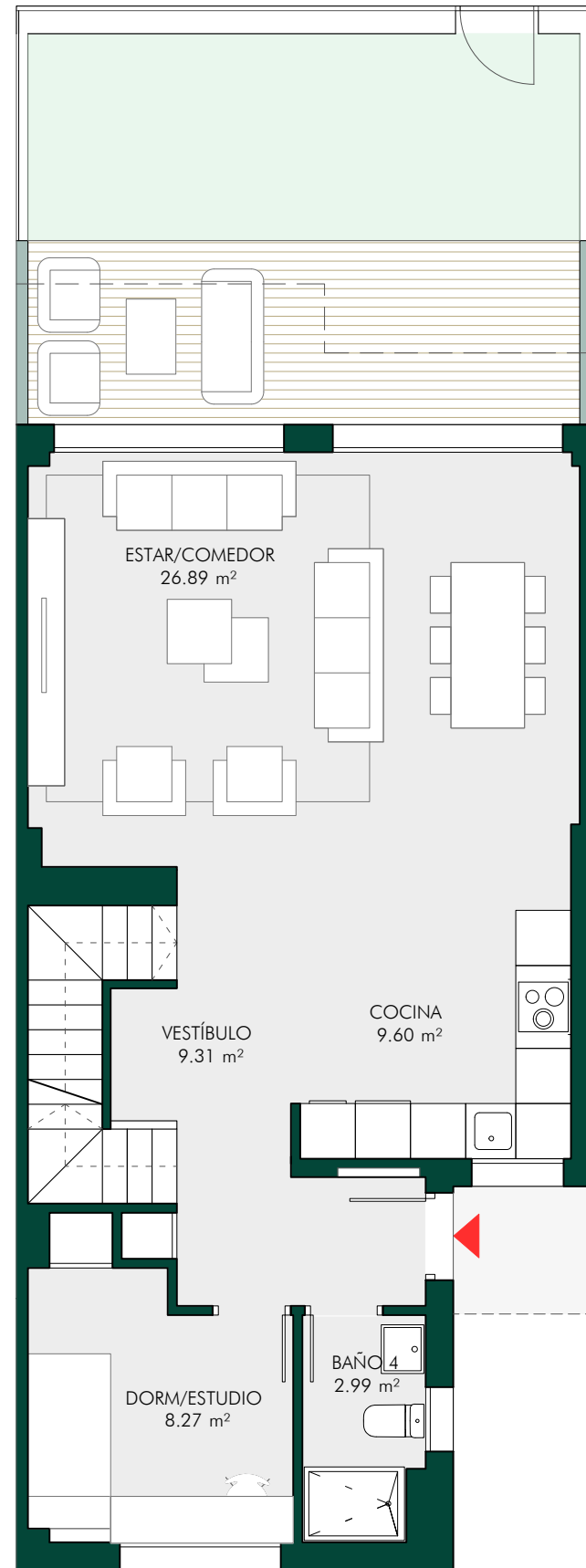
BLOQUE 01  
**VIVIENDA 07**

Superficies aproximadas

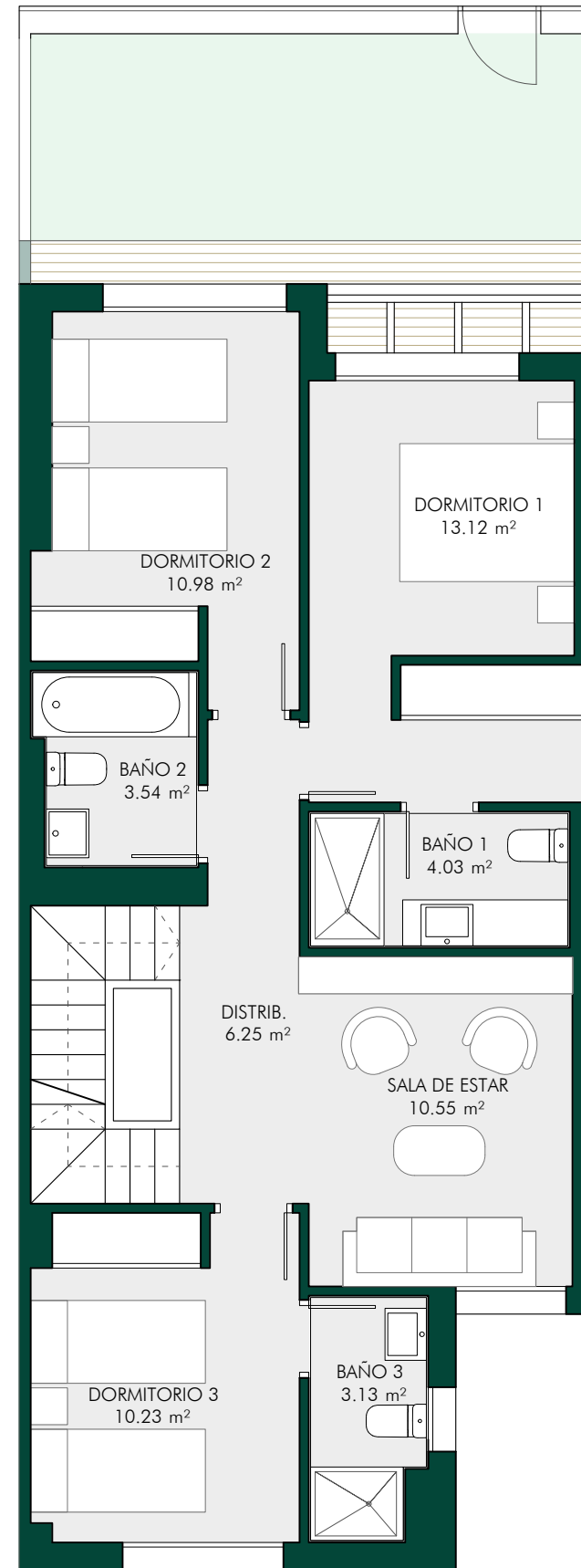
Sup. construida vivienda.....183,68 m2  
 Sup. construida con pp ZZCC.....195,43 m2  
 Sup. útil ext. privativa - PB.....25,50 m2  
 Sup. útil ext. privativa - Solarium.....62,75 m2



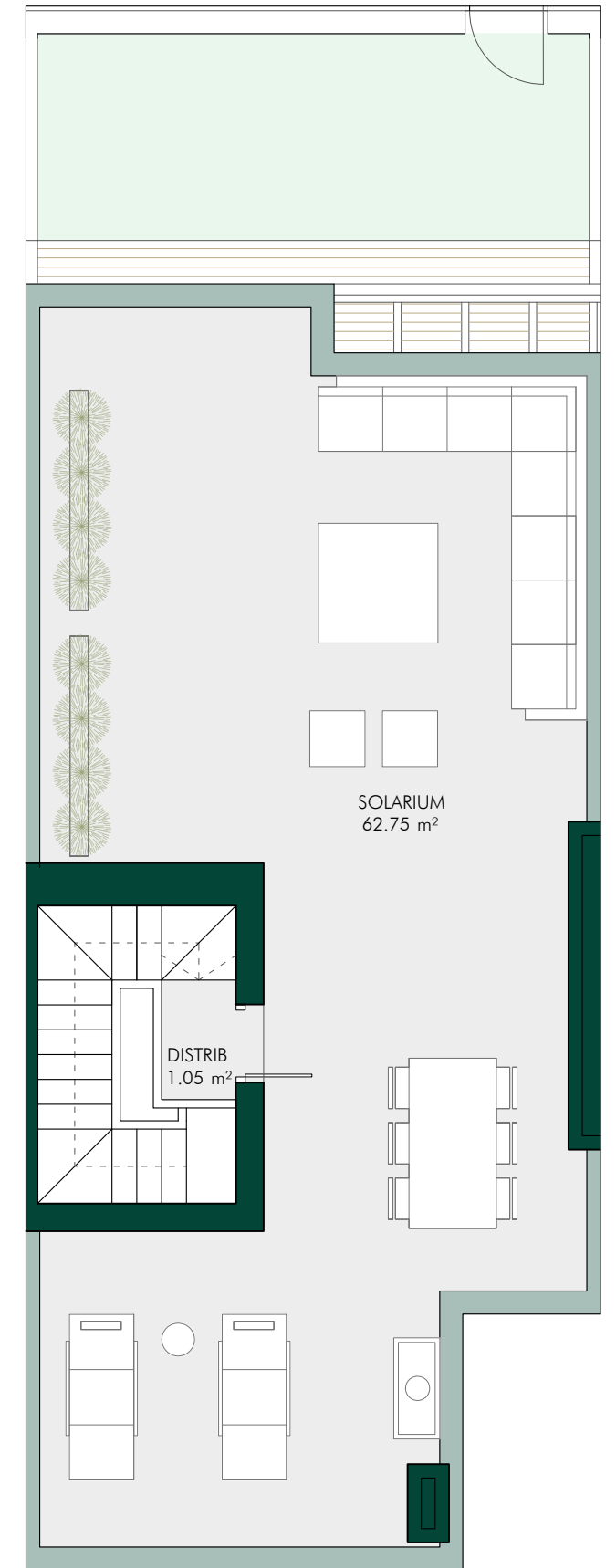
**PLANTA SÓTANO**  
\*Incluye plaza de garaje número 21



**PLANTA BAJA**



**PLANTA PRIMERA**



**PLANTA CUBIERTA**

