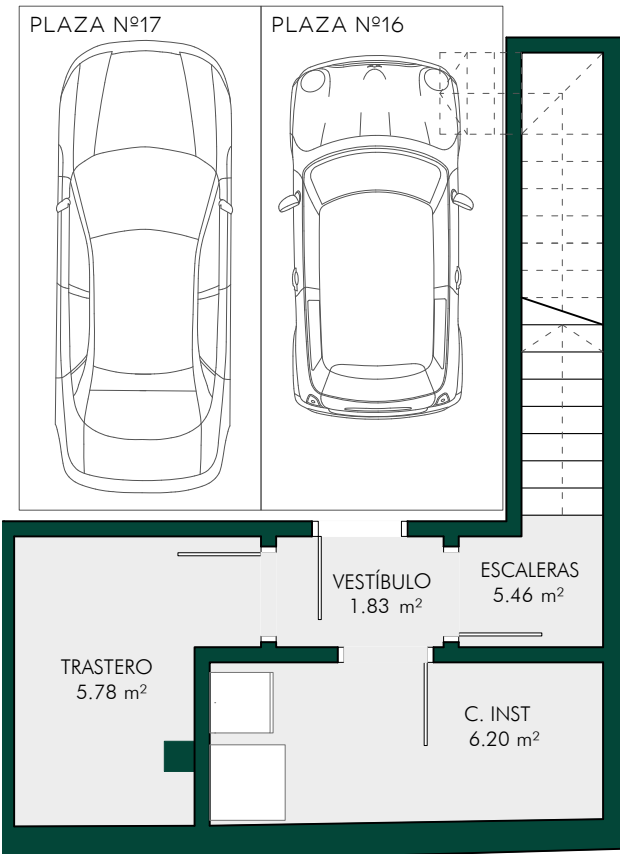
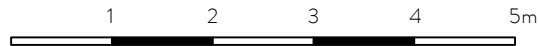


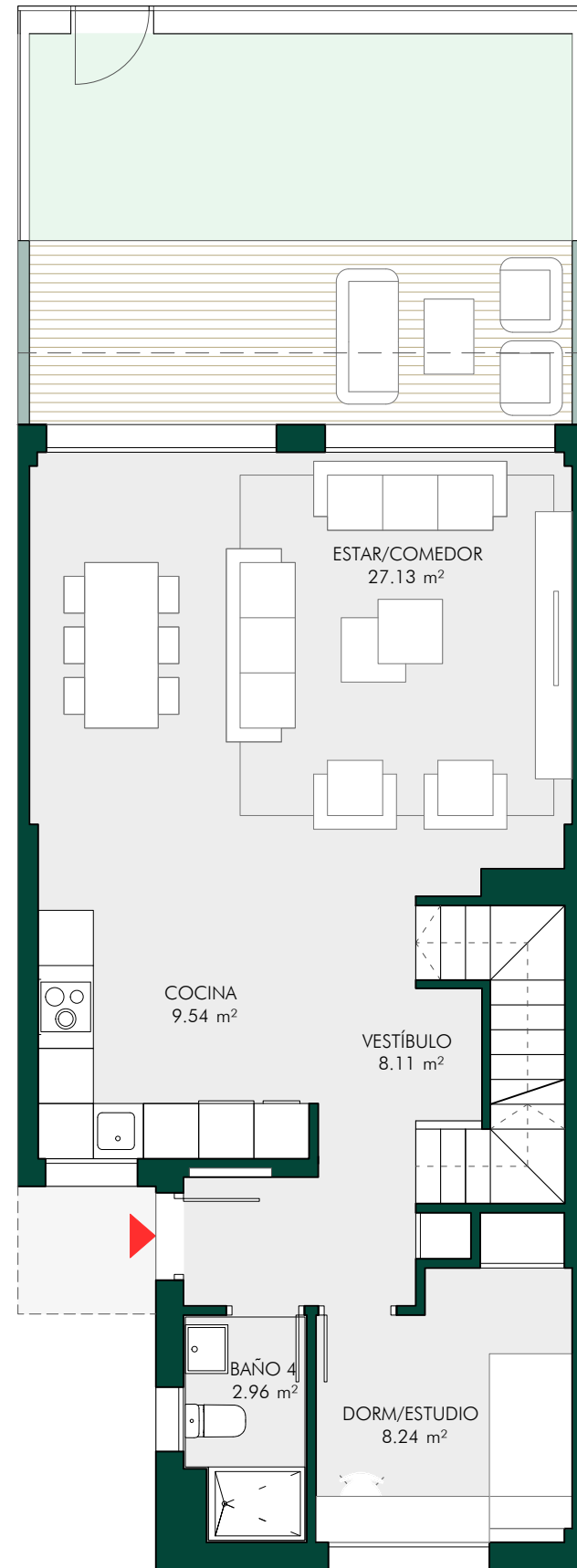
BLOQUE 01
VIVIENDA 06

Superficies aproximadas

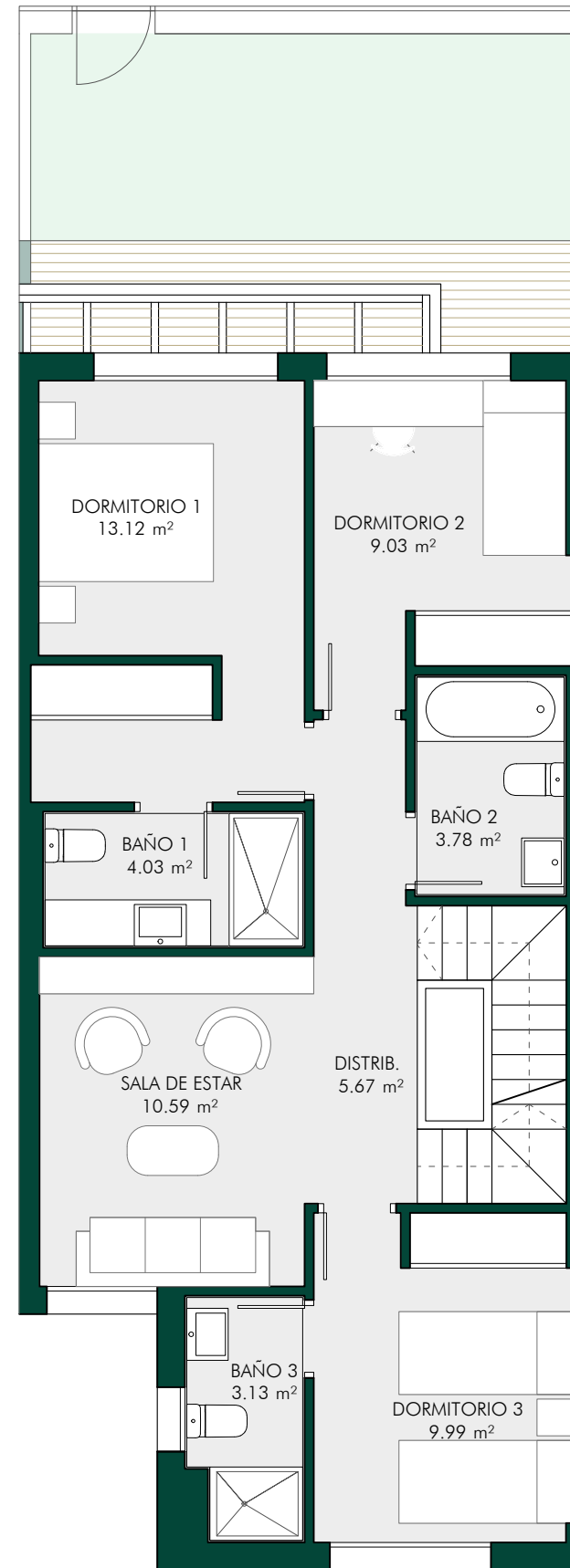
Sup. construida vivienda.....178,42 m²
 Sup. construida con pp ZZCC.....189,83 m²
 Sup. útil ext. privativa - PB.....25,08 m²
 Sup. útil ext. privativa - Solarium.....59,58 m²



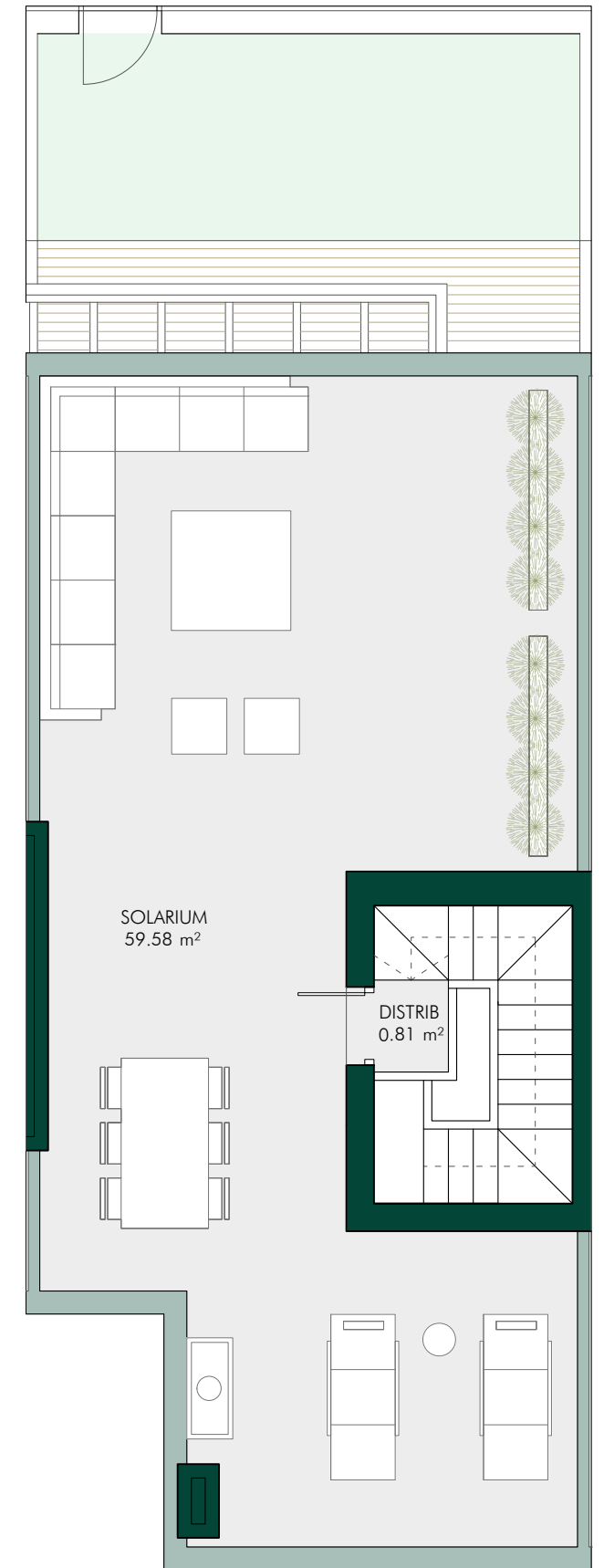
PLANTA SÓTANO
*Incluye plaza de garaje número 18



PLANTA BAJA



PLANTA PRIMERA



PLANTA CUBIERTA

