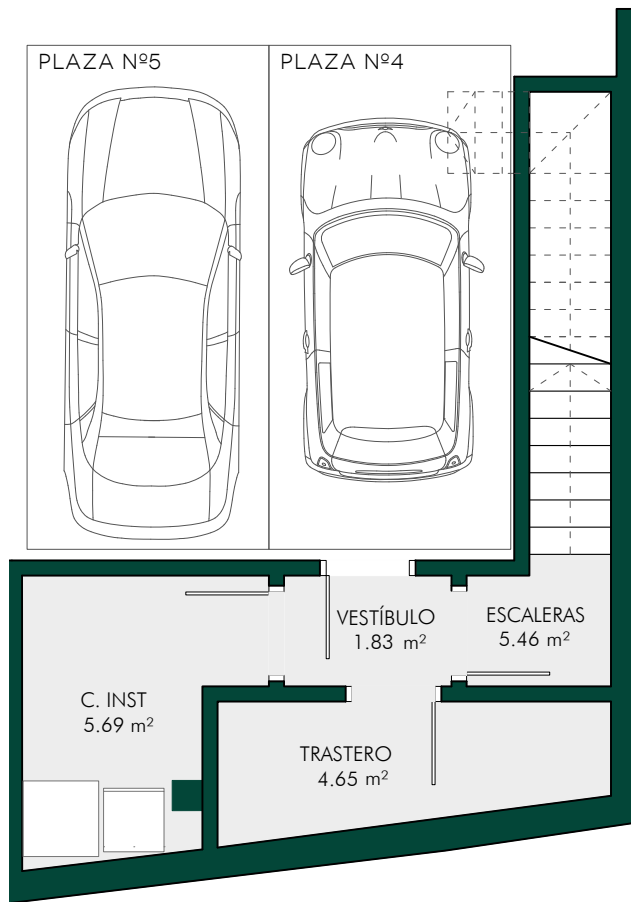


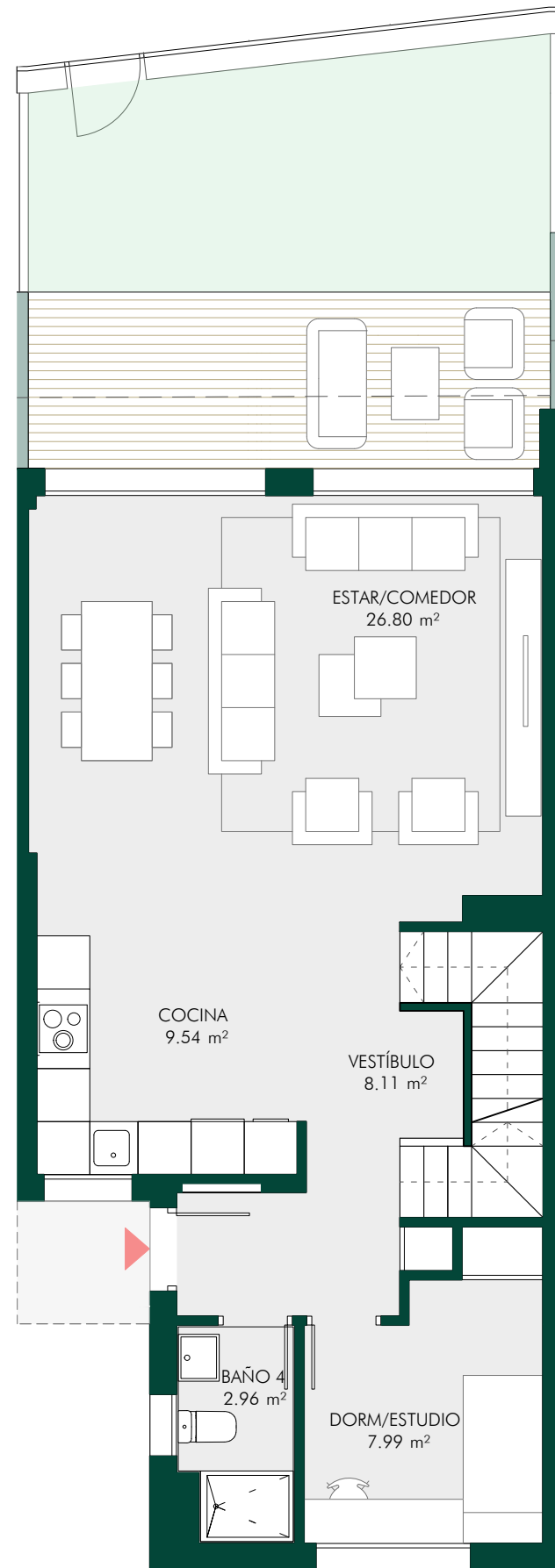
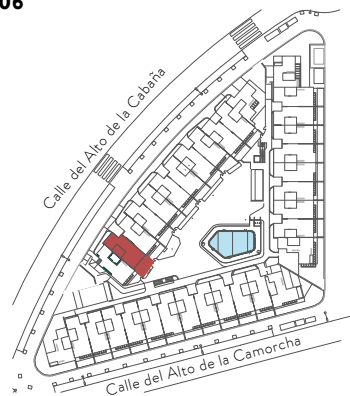
BLOQUE 01
VIVIENDA 02

Superficies aproximadas

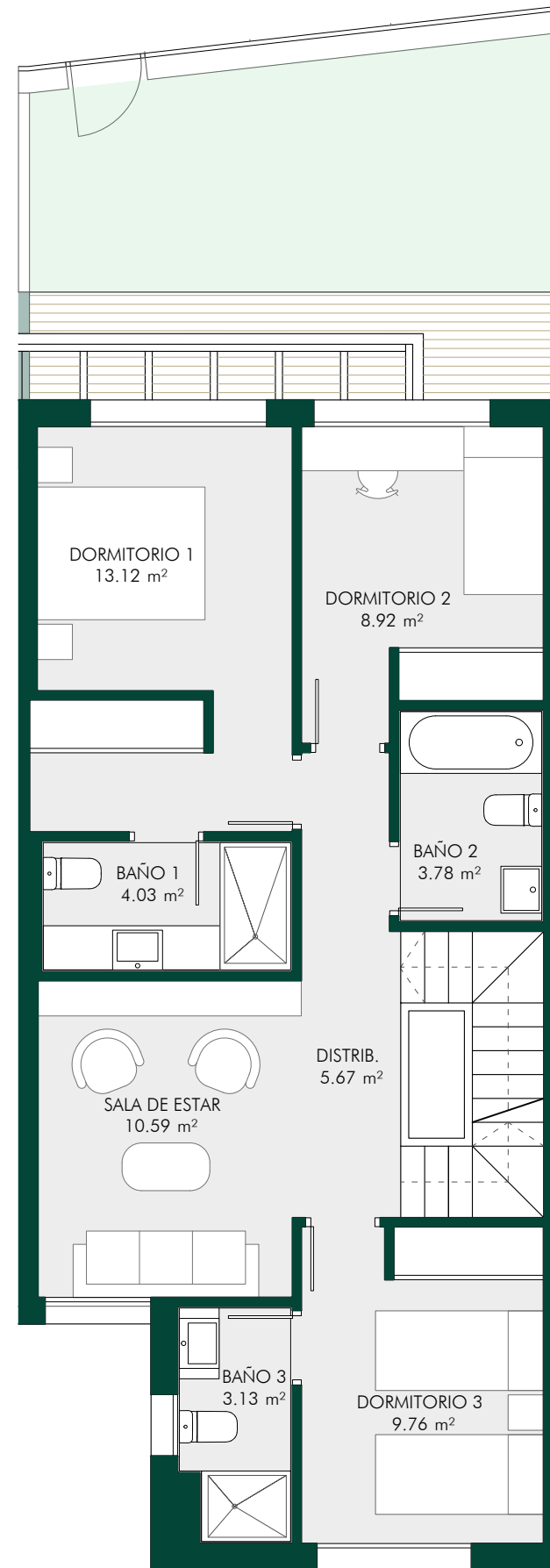
Sup. construida vivienda.....176,66 m²
 Sup. construida con pp ZZCC.....187,96 m²
 Sup. útil ext. privativa - PB.....26,98 m²
 Sup. útil ext. privativa - Solarium.....59,58 m²



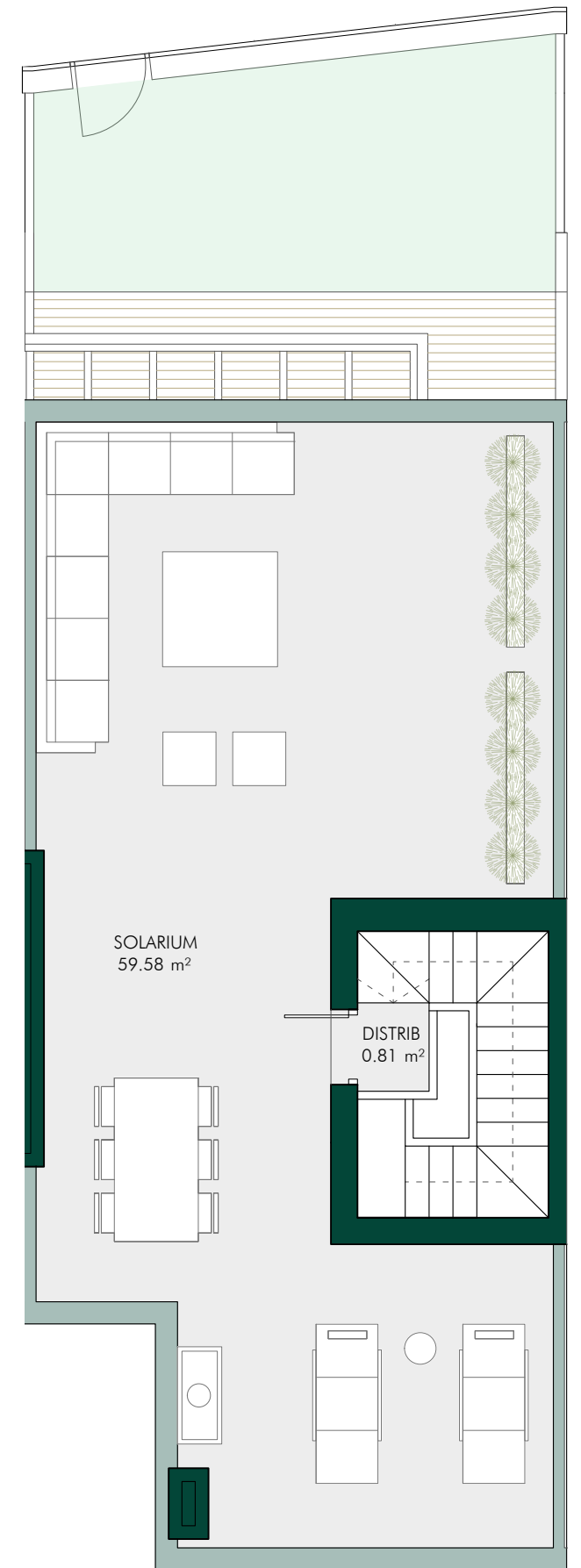
PLANTA SÓTANO
*Incluye plaza de garaje número 06



PLANTA BAJA



PLANTA PRIMERA



PLANTA CUBIERTA